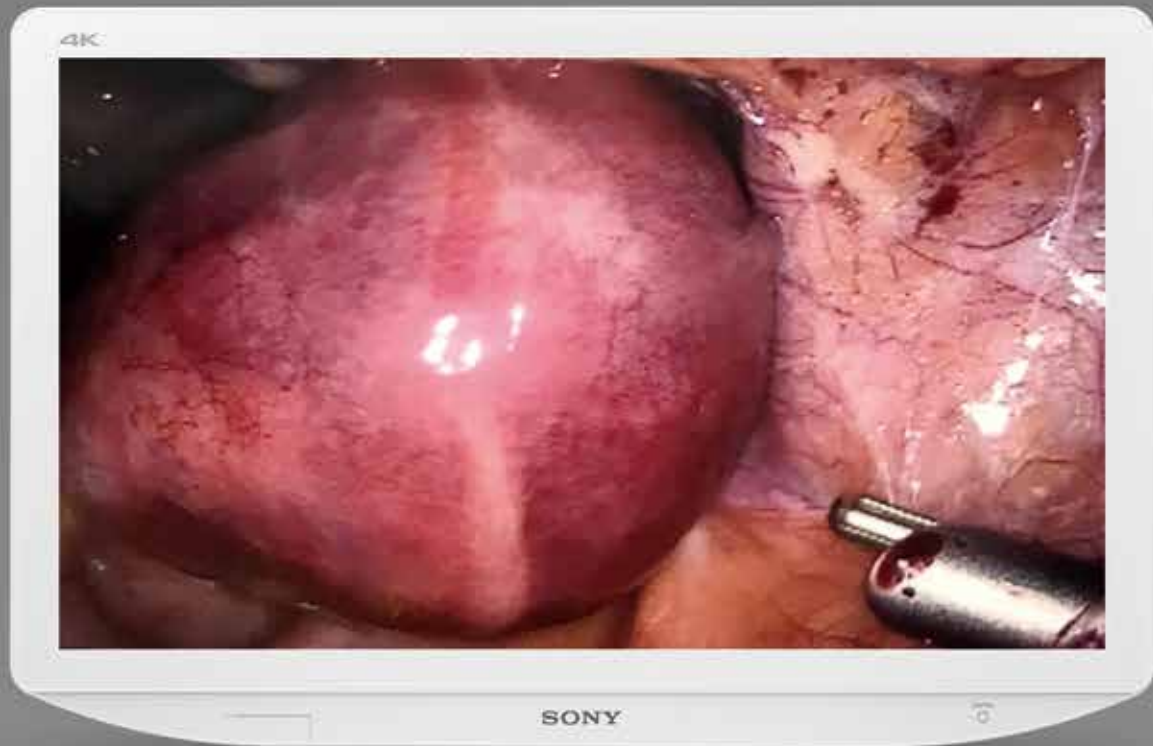


# SONY



LMD-X2705MD  
LMD-X2700MD

4K 27-inch Surgical LCD Monitor

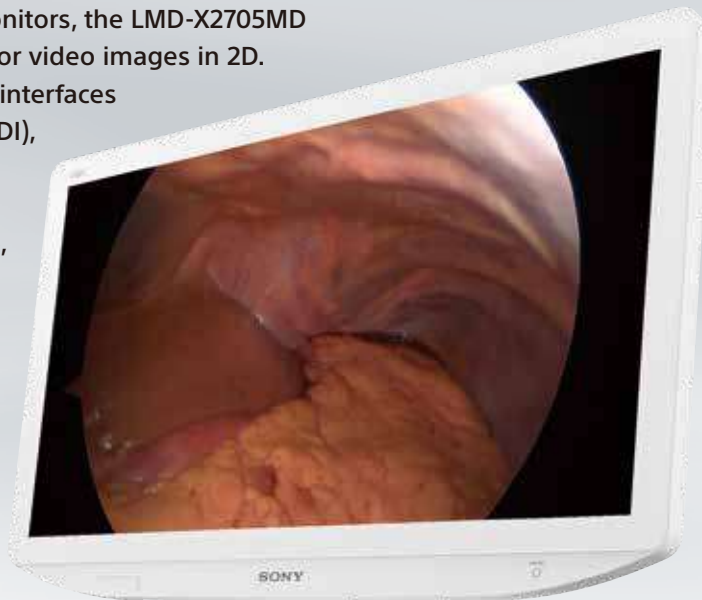


Sony is proud to introduce two 27-inch medical 4K monitors, the LMD-X2705MD and LMD-X2700MD, which can display 4K Ultra HD color video images in 2D.

Offering two types of monitor with DP, HDMI and DVI interfaces (the LMD-X2705MD additionally includes 3G/HD/SD-SDI), Sony enables flexibility to suit various modalities and environments. The latest generation of medical imaging systems reveals more detail than ever before, allowing clinicians to review complex procedures in the OR with greater accuracy.

The LMD-X2705MD and LMD-X2700MD display 4K images with four times the detail of Full HD, and allow surgeons to view pictures from surgical endoscopes, laparoscopic camera systems, and other compatible medical imaging systems with immersive detail in rich and vivid color.

Moreover, these monitors provide a valuable upscaling capability. HD and SD inputs convert to 4K, which means that even conventional HD/SD modality users can fully enjoy the benefits of natural, sharp 4K resolution.



## SUPERB PICTURE QUALITY

### 4K Ultra HD Resolutions

4K resolution on a 27-inch (3840 x 2160)\* screen offers high picture quality.

\* The 27-inch (684-mm) screen is measured diagonally.

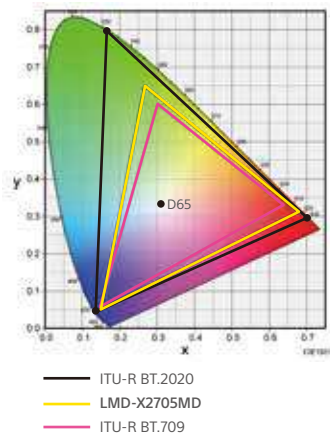


### HD/SD to 4K Upscaling

Thanks to Sony's unique upscaling technology, these monitors provide a natural, sharp 4K view when you upscale HD/SD images to 4K.

### Wide Color Gamut

The LCD panel and signal processing technology of the LMD-X2705MD and LMD-X2700MD provide a wide color gamut which complies with ITU-R Recommendation BT.2020 with a wider color gamut than the BT.709 color gamut.



### HDR Gamma Support

HDR (high dynamic range) enables the display of images with a wider range of brightness levels, greater contrast and also rich colors.

The LMD-X2705MD and LMD-X2700MD offer HLG (Hybrid Log-Gamma) for supporting HDR.

For these monitors to reproduce images with greatest reality, simply select HLG in monitor gamma setting mode when receiving HLG signals from a HDR compatible imaging system.



SDR



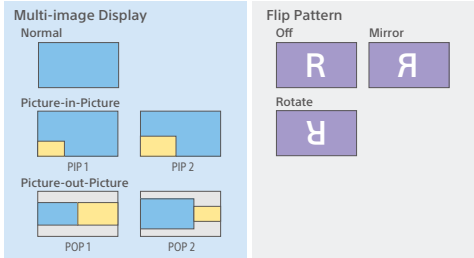
HDR

\*Simulated image

## INTUITIVE OPERATION

### Variety of Display Modes

The LMD-X2705MD and LMD-X2700MD can display images from multiple sources quickly and easily from the menu in a variety of display modes - side-by-side, picture-in-picture (PIP) and picture-out-picture (POP). Also flip patterns such as mirror and flip rotation can be selected easily by pressing buttons.



### Intuitively Operable Control Panel with LED Lighting Navigation

Operation is simplified by the monitors' intuitive, easy-to-use control panel. The LED backlighting only highlights active control buttons, guiding you and reducing the risk of inadvertent operation, especially in dark environments. Also you can assign commonly used functions to up to three custom buttons.

### Auto Signal-Detect and Fail-Safe Modes

These monitors provide two modes for auto input selection. Mode 1 enables the monitor to accept input automatically, without any requirement to select the input. Mode 2 is for failsafe operation; the monitor can switch to a backup input automatically by detecting no signal input. This is particularly useful if input signals are accidentally interrupted.

## EASY INSTALLATION

### Installation-Friendly Cabling

All the connectors face downwards, allowing for easy and organized cable connection. Also cables can be pulled in both upward and downward directions, to suit your various installation needs.



### Installation Flexibility via Direct AC Input or AC Adapter\*

To suit different installation environments, these monitors accept two types of power supply: AC input and DC input using an AC adaptor.

\* The AC-300MD AC adaptor is sold separately.

### VESA Mounting

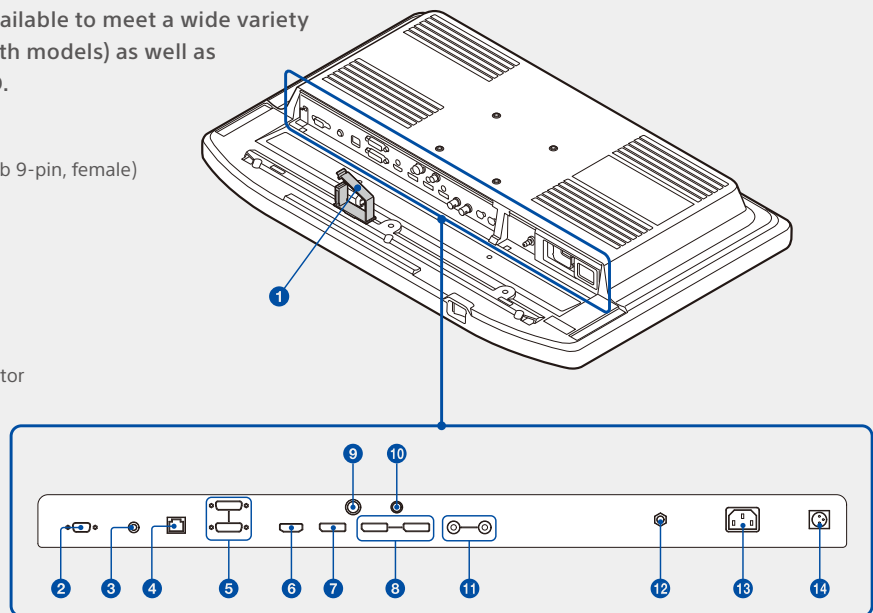
The VESA-mounting standard (100 x 100 mm) enables these devices to be used in a variety of medical installations including cart or boom-mounted articulating arms.

### Compact Design and Edge-to-Edge Flush Surfacd Design for Easy Cleaning

The narrow bezel achieves a wider display area, even within the compact body. Also the monitor's slim and easy-to-hold design facilitates simple user adjustment of the monitor position. The flat surface helps you to easily wipe off liquids and gels from the LCD panel and control buttons, facilitating cleanliness and disinfection.

Various inputs of and outputs are available to meet a wide variety of user needs: DP, HDMI and DVI (both models) as well as 3G/HD/SD-SDI on the LMD-X2705MD.

- 1 Cable clamp
- 2 SERIAL REMOTE RS-232C connector (D-sub 9-pin, female)
- 3 REMOTE connector (Stereo mini jack)
- 4 SERIAL REMOTE connector (RJ-45)
- 5 DVI-D input/output connector (DVI-D)
- 6 HDMI input connector
- 7 DP1 (Display Port 1) input connector
- 8 DP2 (Display Port 2) input/output connector
- 9 12 V 2.5 A (DC output) connector
- 10 5 V 2.0 A (DC output) connector
- 11 3G/HD/SD-SDI input/output connector (BNC-type) (LMD-X2705MD only)
- 12 Equipotential terminal
- 13 AC input connector
- 14 DC input connector



# Specifications

	LMD-X2705MD	LMD-X2700MD
<b>Picture Performance</b>		
LCD Panel	a-Si TFT Active Matrix	
Picture Size (Diagonal)	684 mm (26.93 inches)	
Effective Picture Size	596.2 x 335.3, 684.0 mm (w/h, dia) (23 1/2 x 13 1/4, 27 inches)	
Pixel Pitch	0.15525 x 0.15525 mm	
Resolution	H 3,840 dots, V 2,160 lines	
Aspect Ratio	16:9	
Pixel Efficiency	99.99%	
Luminance (Panel Specification)	800 cd/m <sup>2</sup> (typical)	
Contrast Ratio	1000:1	
Colors	Approx. 1.07 billion colors	
Viewing Angle (Panel Specification)	89°/89°/89°/89° (typical) (up/down/left/right, contrast > 10:1)	
Gamma	1.8, 2.0, 2.2, 2.4, 2.6, DICOM, HLG	
<b>Input</b>		
HDMI Input	HDMI connector (x1) HDMI 2.0b, HDCP1.4 correspondence	
DVI-D Input	DVI-D connector (x1) TMDS single link	
SDI Input	3G/HD/SD-SDI connector BNC type (x1)	-
Display Port	Display Port connector (x2) 1.2, SST, HDCP1.3 correspondence	
Serial Remote (LAN)	D-sub 9-pin (RS-232C) (x1) RJ-45 modular connector (ETHERNET) (x1)	
Remote	Stereo mini jack (x1)	
AC Input	AC input connector (x1) 100 V to 240 V, 50/60 Hz	
DC Input	DC input connector (x1) DC 26 V	
<b>Output</b>		
DVI-D Output	DVI-D connector (x1)	
SDI Output	3G/HD/SD-SDI connector BNC type (x1)	-
Display Port	Display Port connector (x1)	
DC 5 V Output	Round type pin (female) (x1)	
DC 12 V Output	Round type pin (female) (x1)	
<b>General</b>		
Power Requirements	AC IN: 100 V - 240 V, 50/60 Hz, 1.5 A - 0.7 A	
	DC IN: 26 V, 5.2 A (Supplied from AC adaptor)	
Power Consumption	Approx. 149 W (max.)	
Operating Temperature	0°C to 35°C (32°F to 95°F)	
Operating Humidity	30% to 85% (no condensation allowed)	
Storage/Transport Temperature	-20°C to +60°C (-4°F to +140°F)	
Storage/Transport Humidity	20% to 90%	
Operating/Storage/Transport Pressure	700 hPa to 1060 hPa	
	Dimensions (W x H x D) *	
	658.8 x 426.8 x 80 mm	
Mass	658.8 x 508.6 x 319 mm (with SU-600 optional stand)	
	26 x 16 7/8 x 3 1/4 inches	
	26 x 20 1/8 x 12 5/8 inches (with SU-600 optional stand)	
Mounting	Approx. 8.8 kg (when the optional stand is not installed)	
	Approx. 19 lb 6.4 oz (when the optional stand is not installed)	
Mounting	100 x 100 mm VESA	
Supplied Accessories	AC plug holder (x2)	
	Before Using This Unit (x1)	
	CD-ROM (including the Instructions for Use) (x1)	
	Service Contact List (x1)	
Optional Accessories	AC adaptor AC-300MD	
	Monitor stand SU-600MD	
	Foot switch FS-24	

\* The values for dimensions are approximate.

These products are distributed to US and EU as medical devices.  
They satisfy product safety standards (e.g. IEC 60601-1).

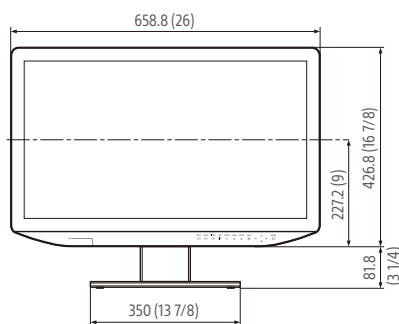
For more details, please contact your nearest Sony sales office or an authorized dealer.

Distributed by

# Dimensions

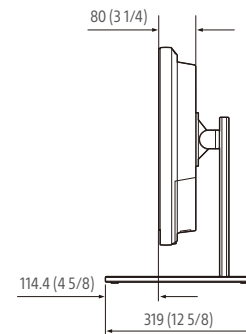
## Front

When an optional stand SU-600MD is attached

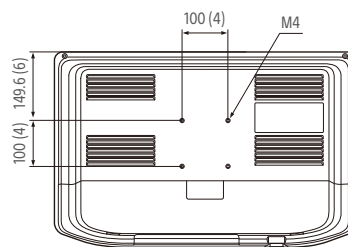


## Side

When an optional stand SU-600MD is attached



## Rear (VESA Mount Instruction)



Unit: mm (inches)

# Optional Accessories



**AC-300MD**  
AC Adaptor



**SU-600MD**  
Monitor Stand



**FS-24**  
Foot Switch

©2019 Sony Corporation. All rights reserved.

Reproduction in whole or in part without written permission is prohibited.  
Features and specifications are subject to change without notice.

All non-metric weights and measurements are approximate.

Sony is a registered trademark of Sony Corporation.

All other trademarks are the property of their respective owners.

Please visit Sony's professional website or contact your Sony representative for specific models available in your region.